

**** If you are going away on a long drive during the holiday season—Ask our staff for Audio CD's of Roald Dahl's stories for the kids.**

NEWSLETTER VOLUME 3

NEWS



- We take great pleasure in welcoming Stacey Payten, who has joined the team at Angle House Orthodontics as our Practice Manager. Stacey's extensive experience has been of great benefit for our patient care and she brings inspiring leadership to our team.
- Melanie has now completed her Certificate III. Well done Mel on all your hard work to finish!
- Our new Dolphin management system is up and running. Thank you all for your patience during our settling in period.
- We now have a new XRay machine at Angle House. This will streamline the process for all of our new patients who will no longer need to go elsewhere for orthodontic X Rays.
- We have updated our website. Make sure you visit us at www.anglehouseorthodontics.com.au



**ANGLE HOUSE ORTHODONTICS WOULD LIKE TO WISH
YOU ALL A MERRY CHRISTMAS AND A HAPPY NEW YEAR!**

Prizes To Be Won

Brush, Brush, Brush

Every month we are rewarding our patients with \$15 iTunes gift cards and movie vouchers!

Your Dental Hygienist Jane will nominate you to be in the draw if you have the best oral hygiene for the month!

P.S Remember to floss and use your little yellow interdental brush!!!



**** COMING UP IN 2012 ****

Direct Debit Payment Options

JAW ALIGNMENT

Here at Angle House Orthodontics we help to correct more than just crooked teeth. A common problem for many of our patients is that their jaws are out of alignment, causing problems with their bite and potential damage to their teeth.

The CBJ can be used to help.



CONTACT DETAILS



P: 03 9817 6427

F: 03 9816 9337

7 Whitehorse Road

Balwyn 3103

www.anglehouseorthodontics.com.au

info@anglehouseorthodontics.com.au

COMPETITION WINNER:

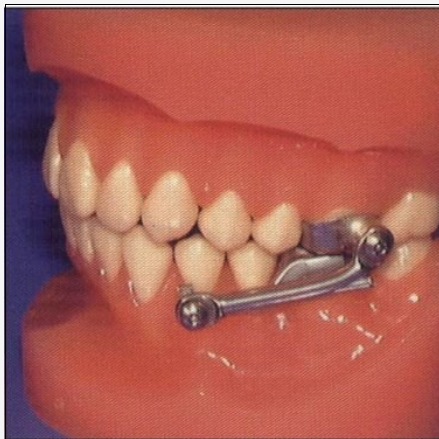
The Winner of our iPad competition will be announced on Monday 19th December. Good luck to all our contestants on getting their friends to vote for their photo.



CBJ—Cantilever Bite Jumper

The Cantilever Bite Jumper (CBJ) appliance corrects an overbite by holding the lower jaw forward. The main objective of this growth-modifying appliance is to help the jaws develop normally and to achieve facial balance. This appliance effectively encourages the lower jaw to grow and catch up to the upper jaw. When treatment is complete, the top and bottom jaws are in alignment with each other.

How does it work?



The appliance consists of four crowns—one crown covering a molar in each corner of the mouth. Attached to the two upper crowns is a stainless steel sleeve or cylinder. Attached to the two lower crowns is a rod that slides into the sleeve hanging down from the upper crown. The sleeves and rods hold the lower jaw in place to create a healthy bite. Eventually, the lower jaw will grow into this new position, and the appliance can be removed. This appliance is fixed in the mouth and is worn twenty-four hours a day until the desired result is achieved, usually in nine to twelve months. The appliance may also have an expander screw in the middle of the upper palate in order to widen the upper jaw to make room for crowded teeth. This expander screw is slowly turned, little by little, using a small, key-shaped tool. Typically, the patient or parent turns the screw once or twice per day.

The change in the appearance of the jaw is quite dramatic, even at the beginning of treatment.